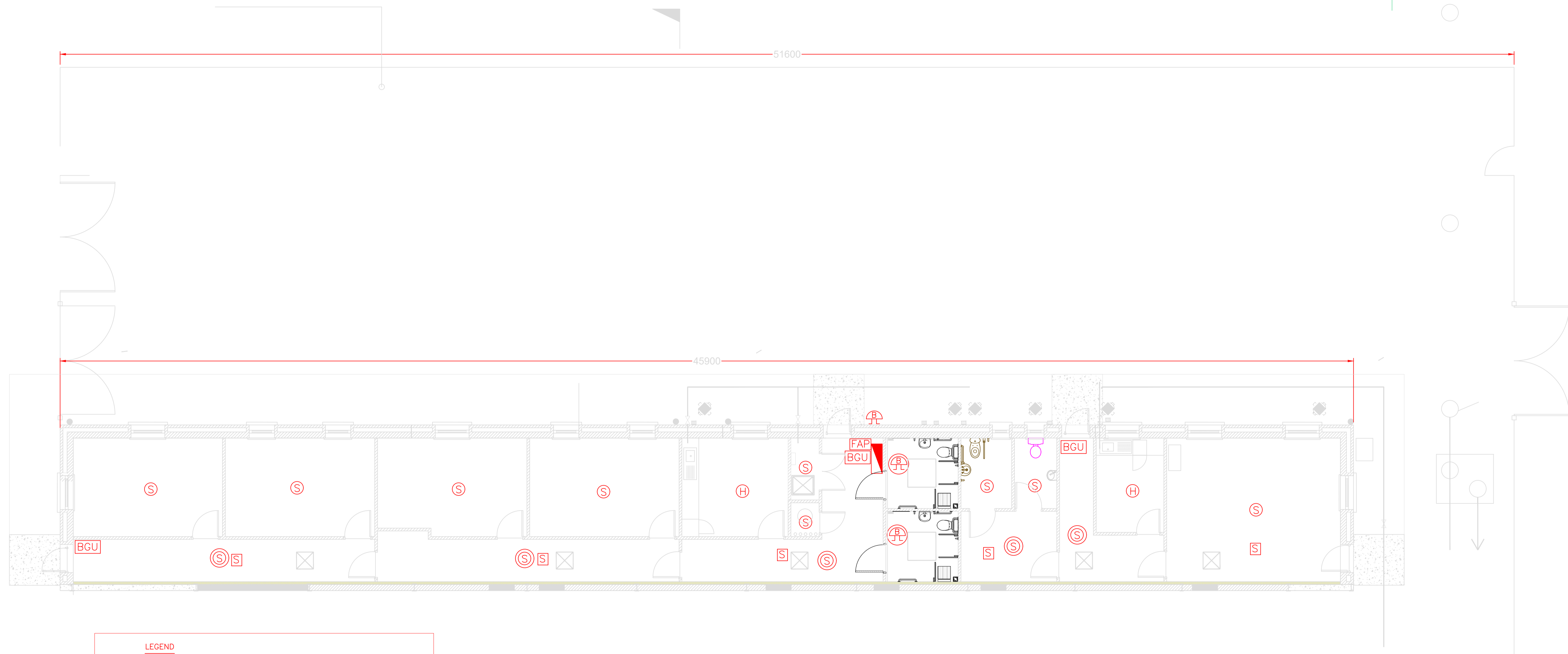


NOTES:
 Figured dimensions only to be taken from this drawing. All dimensions to be checked on site. Department to be informed immediately of any discrepancies before work proceeds.



LEGEND

- Main Distribution Board
- Fire Alarm Panel c/w GSM Dial-Out Facility
- Optical Smoke Detector
- Combined Detector/Sounder indicated thus.
- Optical Smoke Detector Located in Ceiling Void c/w Remote Indication
- Heat Detector
- Call Point
- Combined Sounder with Flashing Beacon- External
- Combined Sounder with Flashing Beacon- Internal

Notes:
 The Fire Alarm System to be supplied, installed and commissioned to Irish Standard IS:3218L1-M with Automatic Detection in all Areas
 Fire Alarm to be Addressable System
 Fire Alarm Devices to be programmed with names and numbers as provided by Architect
 Sounders to be incorporated into Detectors and wired on Detector Loops.
 Detectors in voids to be fitted with remote indicators mounted outside the void
 Fire detection to be included in Attic Spaces
 Attic Space Light Switches to be provided at Access Hatch. Switch to be fitted with neon indicator.

REV	DESCRIPTION	BY	DATE
job title			
NEW BFW OFFICES AT GORMANSTON CAMP Co. MEATH			
drg.title			
PROPOSED SERVICES FIRE ALARM LAYOUT			
scale			
1:75			
drawn	checked	date	
DDD	C.Carey	May.2026	
PLANNING & DESIGN OFFICE Infrastructure & Utilities, 2 Engr. Group, Cathal Brugha Bks., Dublin 6.			
drg.no.		rev	
PDE-B14-85-403			